



Jelgava

ANNO 1265
Mitau



WHAT TO SEE

1 JELGAVA HOLY TRINITY CHURCH TOWER

Discover one of the most popular tourist objects in Jelgava, travel in time through interactive history displays, enjoy art exhibitions and observe the city from the sightseeing platform at the height of 37 metres!

Akadēmijas street 1, ☎+371 63005447, 25619266
www.visit.jelgava.lv

2 JELGAVA HISTORY AND ART MUSEUM OF ĢEDERTS ELIAŠ

Step into the first university in Latvia and get to know the rich history exhibition of Jelgava! Explore the thematic exhibitions and collection of works by the acclaimed Latvian artist Ģederts Eliass and observe the panorama of the city from the tower balcony at the height of 25 metres which is open to visitors from May to October.

Akadēmijas street 10, ☎+371 63023383
www.jvmm.lv

3 MEMORIAL MUSEUM OF ĀDOLFS ALUNĀNS

Feel the atmosphere of the early 20th century in the authentic premises of the museum, where the "father of Latvian theatre" Ādolfs Alunāns once resided. Enjoy the role of an actor by stepping on stage or stroll through the historic Mītavas iela with the help of the multimedia appliance "Alunāns un Jelgava".

Filozofu street 3, ☎+371 63021180, www.alunans.lv

4 JELGAVA PALACE AND TOMBS OF THE DUKES OF COURLAND

Visit the largest baroque palace in the Baltic States – the former residence of the Dukes of Courland and Semigallia, currently Latvia University of Life Sciences and Technologies, visit the museum of Jelgava Palace. You are also welcome to visit one of infrequent burial sites of ruling dynasties of the world – the vaults of the Dukes of Courland at Jelgava Palace, where you can see 30 sarcophagi and reconstructed burial costumes.

Lielā street 2,
☎+371 63005617 (palace),
☎+371 63962197 (tombs)
www.jelgavaspils.lv

5 JELGAVA EXHIBITION OF LATVIAN RAILWAY HISTORY MUSEUM

Learn more about the Jelgava railway node – one of the oldest and most important in Latvia, and watch educational movies and cartoons. Discover how train movement was organised from the 19th century to the present day and go on educational hikes.

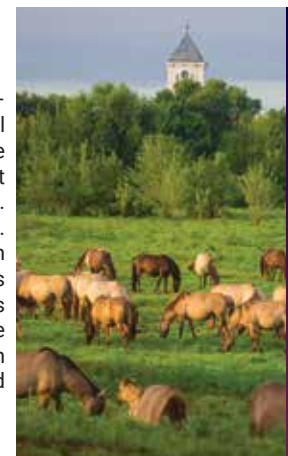
Stacijas street 3, ☎+371 20034850
www.railwaymuseum.lv



6 PILSSALAS STREET AND LIELUPE FLOOD-PLAIN MEADOWS

Visit the newly opened recreation area by the River Lielupe – use the children's playground, exercise in the physical activity and outdoor basketball court or relax in one of the hammocks, enjoy treats at the picnic tables. Here at a smart bench you can charge your mobile phone, Wi-Fi is available. A roller-skating and cycling route is around the playground. Climb the 19,2 metres high sightseeing tower, from which you can observe alluvial meadows of Lielupe, wild horses and the panorama of the city! On prior booking guided tours available on an off-road vehicle! There is a boat dock at the tower and the tower is also accessible from the river side. On prior booking a special wheelchair for people with reduced mobility is available.

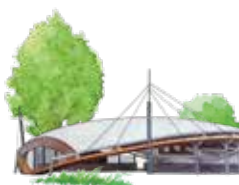
Pilssalas street, + 371 20264343 (nature guide)



7 PASTA ISLAND

Explore Pasta Island in all seasons! Relax on the beach, swim in Lielupe river, take part in outdoor activities – play volleyball, use outdoor exercise machines, children's playgrounds, go on a boat, catamaran or SUP board, roller skate or ride a bike. In winter, go ice skating at the public ice rink. Visit the Chamotte Sculpture park with more than 20 large-format chamotte sculptures and see wooden sculptures in the southern part of the island. Participate in Jelgava's largest festivals and events at the open-air concert hall "Mītava".

Pasta Island



8 VECPILSĒTAS STREET QUARTER

Explore the oldest part of Jelgava's wooden architecture that survived the burning in 1944. In Jelgava Old Town House you can learn the story of the house and see the lost wooden architecture of Jelgava with the help of multimedia.

Vecpilsētas street 14, ☎+371 63005407, 27309673

Learn about the restoration process of metal, textile and ceramic products at the Zemgale Restoration Centre.

Vecpilsētas street 14, ☎+371 63021855

Learn about weavers' craft skills, participate in thematic masterclasses and learn about Latvian folk wisdom at the House of Latvian traditions and crafts.

Vecpilsētas street 2, ☎+371 29116210

Visit a memorial sign Dobeles gate next to the House of Latvian traditions and crafts, which marks the location of 17th century Jelgava's historical gates. Take a look at the development of Latvian state with the help of the environmental object "Wheel of Time 100" by sculptor Kārlis Īle. It is lit during the dark hours of the day. Walk along Nagliņu Road, which leads from the environmental object "Wheel of Time 100" to the memorial sign Ezera gate. Nagliņu Road marks the location of the ancient city defensive wall and the boundaries of the city.



9 WATER TEMPTATION



During summertime, you can enjoy a boat ride on the Driksa and Lielupe river — the boats can accommodate from 7 to 40 guests per ride. The rides last from 30 minutes to an hour, during which you will discover the most beautiful scenery of Jelgava from water. The ship piers are located at the promenade of J. Čakste blvd., by the Mītava bridge. Enjoy unforgettable boat rides down the Lielupe, Driksa and other rivers nearby. For added excitement, choose a nightly boat ride and appreciate the breathtaking view of the illuminated city.

Find out more the "Water Temptation" section, www.visit.jelgava.lv



10 CHILDREN'S LEISURE AND PLAY AREA



Get active in the fresh air and discover Latvia's natural values. The playground town is divided into active and educational areas. The active playgrounds feature obstacle courses, aerial trails, tunnels, swings, trampolines, a climbing wall and slides. The educational playgrounds offer the opportunity to learn about the diverse natural materials of Latvia.

Uzvaras Park



11 WOODEN BOARDWALKS AT THE FLOOD-LAND MEADOWS OF THE RIVER SVĒTE



Learn about the environmental values in the Svēte floodplain meadows and walk along the 1.6 km network of wooden boardwalk trails.

The territory between Sniega Street, Vītolu Road, Būriņu Road, and Miežītes Road.



12 CANDY WORKSHOP KARAMEĻU DARBŅĪCA



Visit the sweetest spot in Jelgava: the colourful open-plan caramel workshop, where you can discover the secrets of candy-making and participate in caramel cooking and tasting workshops!

Rūpniecības street 1a, +371 29851426, www.karameludarbница.lv



13 SOVIET UNION CAR COLLECTION IN ANRU MOTORS



Visits one of the most important collections of historical vehicles in Latvia. The museum features quality restored and carefully preserved Soviet-era cars, many of which are unique and authentic. The museum also reviews exhibits produced during Soviet times.

*Garozas street 15a, +371 29296947
www.anrumotors.lv/muzejs/*



14 BREWERY VIEDI



Learn about the brewing process from malt to finished product with an attractive and knowledgeable guide, taste the company's products and buy your favourite beer to take away.

*Cukura street 21, +371 20777767, 26450090
www.viedalus.lv*



RESTAURANTS

- **Grill Bar&Restaurant Parks**

Kr. Barona street 3, +371 20118881

- **Restaurant Pilsētas elpa**

Pasta street 1, +371 26633703

- **Restaurant Chocolate & Pepper**

Kr. Barona street 6, +371 63010220, 23770399

- **Restaurant PakČoi**

Lielā street 3, +371 20096600

- **Restaurant Viedi**

Cukura street 21, +371 27827820

- **Restaurant-Confectionary Rēver**

Ganību street 78, +371 27290606

CAFETERIAS, PUBS

- **Cafe - Central Cafe Jelgava**

Lielā street 6, +371 20144454

- **Tavern Istaba**

J. Čakstes Boulevard 7, +371 63025909, 20227939

- **Bistro&Confectionary Silva**

Driksas street 7/9, +371 29266586, 22009889

- **Brokastnīca cafe**

Jāņa Asara street 1, +371 26671966

- **Jelgavas Ezītis miglā**

Lielā street 19a, +371 24203211

- **Lunch restaurant Otto**

Lielā street 17, +371 26661151

- **Pub Melno cepurīšu balerija**

Raiņa street 28, +371 27787776

- **Cafe Pie mednieka**

Vecpilsētas street 15, +371 26385018

- **Cafe-Pizzeria**

Akadēmijas street 4, +371 20319837

- **Cafe Tavs mirklis**

Pasta street 45, +371 22775533, 22772211

- **Cafe Rausis**

Valņu street 10, +371 29516598, 63027795

- **Cafe-Bakery Prospekts 9**

Zemgales prospect 9, +371 27814539, 26495564

CONFECTIONARY

- **Confectionary Tarte**

Mātera street 26, +371 20136090

- **Confectionary pāte bakery**

Lielā street 14, +371 27200002

FAST FOOD RESTAURANTS

- **McDonald's**

Brīvības boulevard 1, +371 26468158

- **Hesburger**

Katoļu street 10b, +371 25911221;

Loka highway 2f, +371 26480302

- **Kebaberia KRO**

Mātera street 40, +371 28884300

- **Muncheez**

Pērnavas street 10a, +371 28000400

PIZZERIAS

- **Pizzeria Picu darbnīca**

Rīgas street 1, +371 20003993

- **Pizzeria Čili Pica**

Katoļu street 7 and Rīgas street 11, +371 63045555

TEA HOUSES, WINE BARS

- **Tea house Silva**

Pilssalas street 2a, +371 22119119, 29266586

- **Noliktava Nr. 2**

Lielā street 5, +371 29236269

SUSHI BARS

- **Sushi bar Rock&Roll**

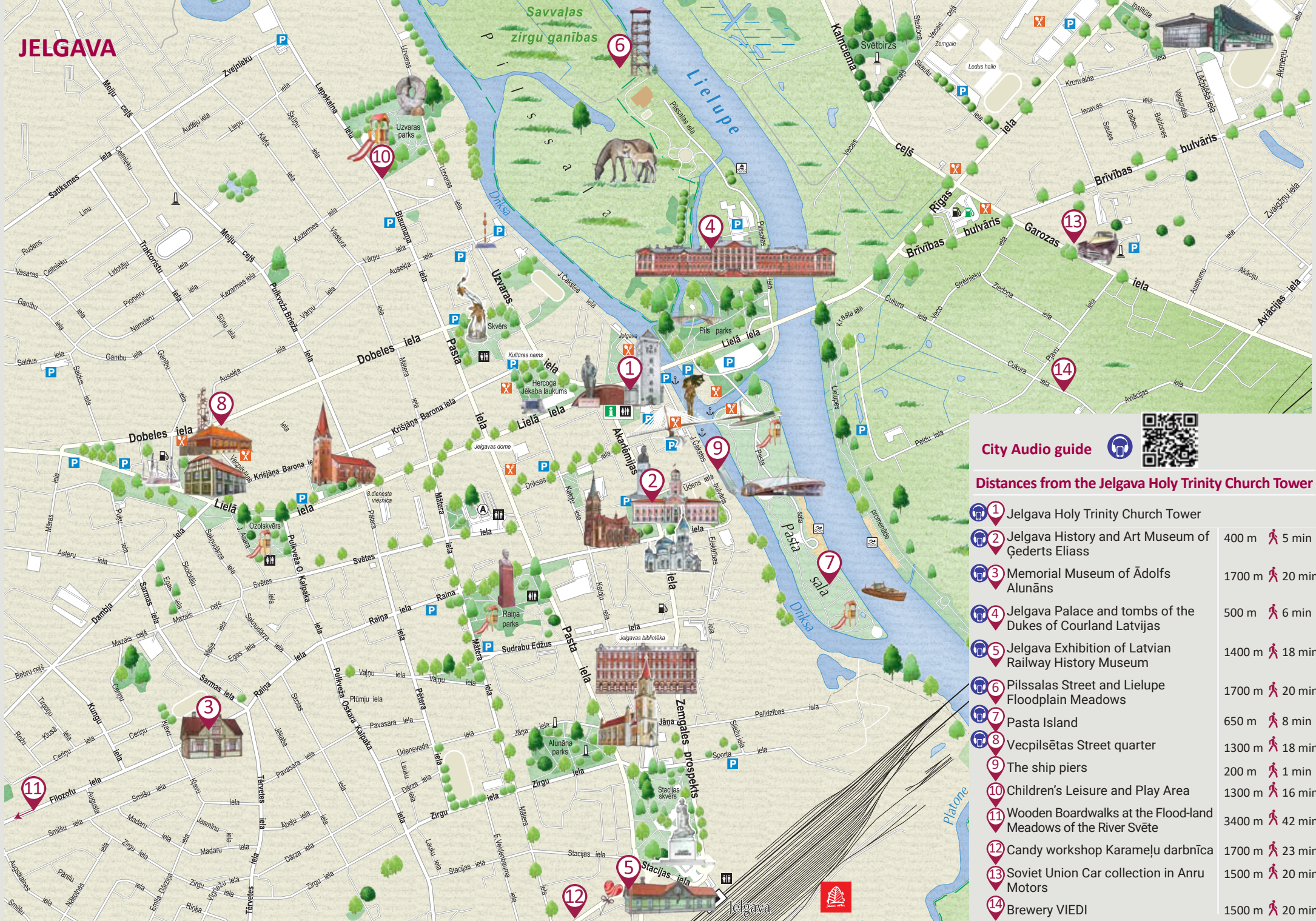
Raiņa street 24, +371 20396940

TAKEAWAY

- **PikniKarba**

+371 26336225, 20089525

JELGAVA



City Audio guide



Distances from the Jelgava Holy Trinity Church Tower

1	Jelgava Holy Trinity Church Tower		
2	Jelgava History and Art Museum of Ģederts Eliass	400 m	5 min
3	Memorial Museum of Ādolfs Alunāns	1700 m	20 min
4	Jelgava Palace and tombs of the Dukes of Courland Latvijas	500 m	6 min
5	Jelgava Exhibition of Latvian Railway History Museum	1400 m	18 min
6	Pilsālas Street and Lielupe Floodplain Meadows	1700 m	20 min
7	Pasta Island	650 m	8 min
8	Vecpilsētas Street quarter	1300 m	18 min
9	The ship piers	200 m	1 min
10	Children's Leisure and Play Area	1300 m	16 min
11	Wooden Boardwalks at the Flood-land Meadows of the River Svēte	3400 m	42 min
12	Candy workshop Karamēļu darbnīca	1700 m	23 min
13	Soviet Union Car collection in Anru Motors	1500 m	20 min
14	Brewery VIEDI	1500 m	20 min



WHERE TO SPEND THE NIGHT

- **Hotel Jelgava** (80 visitors)
Lielā street 6, ☎+371 63026193, 63023349, 29145961, www.hoteljelgava.lv
- **Hotel Zemgale** (78 visitors)
Skautu street 2, ☎+371 63007707, www.skzemgale.lv
- **Guest house Kārklui muiža** (28 visitors)
Kārklui street 67, ☎+371 2622266
- **Guest house Zeltāres** (10 visitors)
Kalniciema road 117, ☎+371 29322555
- **Motelis "Riverside Motel Jelgava"** (80 visitors)
Birzes street 49, ☎+371 22313433, 29990477



JELGAVA REGIONAL TOURISM CENTRE

+371 63005447, 25619266
tic@tornis.jelgava.lv
 Akadēmijas street 1, Jelgava
www.visit.jelgava.lv

- Tourist information
- Souvenirs
- Routes and Booklets
- Guide services
- Rent of premises



Visit Jelgava



[visit.jelgava](https://www.instagram.com/visit.jelgava)



REĢIONĀLAIS
TŪRISMA CENTRS